

1996

PRIMARY ONE - ENGLISH ANSWER KEY
2019-2020 ACADEMIC YEAR

Date: Wednesday, 15th April 2020

A. Fill in the missing letters. (Months)

1. J A N U A R Y

2. F E B R U A R Y

3. M A R C H

4. A P R I L

5. M A Y

6. J U N E

7. J U L Y

8. A U G U S T

9. S E P T E M B E R

10. O C T O B E R

11. N O V E M B E R

12. D E C E M B E R

B. Circle the days of the week.

January Monday Summer Wednesday Spring Tuesday
December October Friday Sunday Thursday Saturday

C. Look and Write.

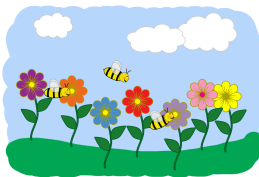
Spring

Summer

Autumn

Winter

1.



Spring

2.



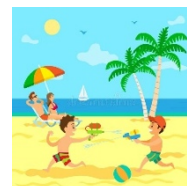
Winter

3.



Autumn

4.



Summer